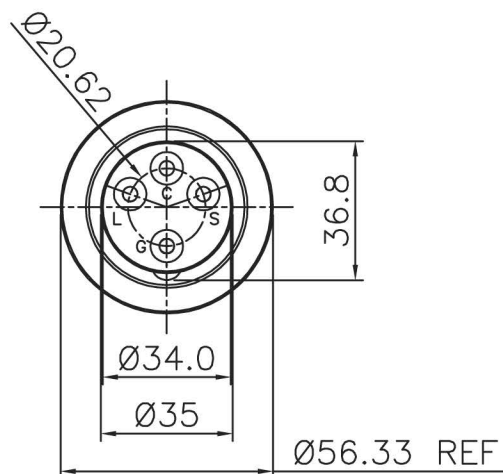
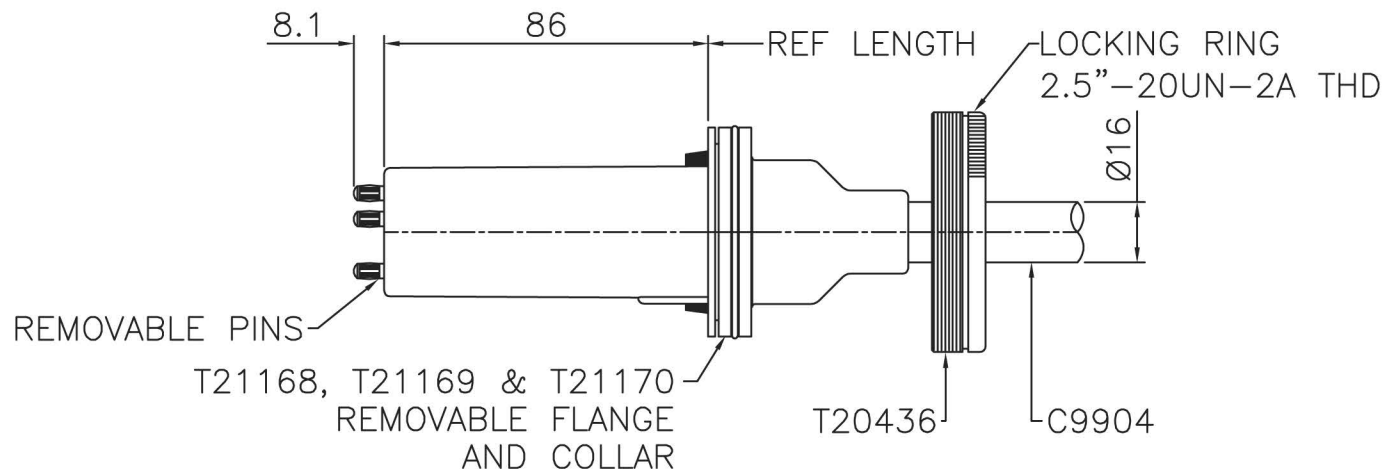


CONTACTS TO FIT Ø4mm HOLE

NOTE: WITH FLANGE AND COLLAR REMOVED MAX DIA 40mm



END VIEW WITHOUT  
LOCKING RING



ESSEX PART NUMBERS  
A01020/\*\*M  
CABLE TYPE C9904

THIS DATA SHEET IS FOR IDENTIFICATION  
PURPOSES ONLY. NOMINAL DIMENSIONS IN MM.

#### TECHNICAL DATA:

##### TERMINATION:-

NOMINAL OPERATING VOLTAGE 45KV  
CABLE LENGTH TOLERANCE  $\pm 100$ mm  
SOLID RESIN TERMINATION.

CABLE:- VOLTAGE WITHSTAND 45KV DC

FOR FULL CABLE DATA SEE ESSEX CABLE DATA SHEET

#### ACCESSORIES:

MATING RECEPTACLE S01011

PIN REPLACEMENT KIT P00432

INSTALLATION GREASE P00075

#### INSTALLATION:

##### WARNING:

CABLE SHOULD ONLY BE FITTED BY A TRAINED PERSON.  
CABLE CAN RETAIN ELECTRICAL CHARGE.  
DISCHARGE TO EARTH BEFORE HANDLING.  
A SUITABLE HIGH VOLTAGE GREASE SHOULD BE  
APPLIED TO THE TERMINATION.

ENSURE THAT THE TERMINATION IS FULLY INSERTED  
IN THE SOCKET BEFORE SECURING THE LOCKING RING.

AFTER INSTALLATION FULLY TIGHTEN LOCKING RING  
TO PREVENT UNAUTHORISED DISCONNECTION.

# ESSEX

Dandong Light Electric Co.,Ltd  
Rm.1606 Jiadi Square,No.64,Binjiang Middle Rd,  
Zhenxing, Dandong, Liaoning China  
T:0415-6123232  
F:0415-6123533

#### REVISIONS

NO.	DATE	BY

DUE TO CONTINUING PRODUCT DEVELOPMENT ESSEX X-RAY RESERVES THE RIGHT TO MODIFY DATA WITHOUT NOTICE

DRAWN	APPROVED	DATE	ISSUE	SCALE
MGM		09.12.09	1	N.T.S.

© NOT TO BE REPRODUCED IN WHOLE OR PART WITHOUT  
PRIOR PERMISSION OF ESSEX X-RAY & MEDICAL EQUIPMENT LTD.

#### TITLE

4 PIN 45KV TERMINATION SOLID PLUGS  
ON C9904 CABLE

#### DRAWING No.

DS1081