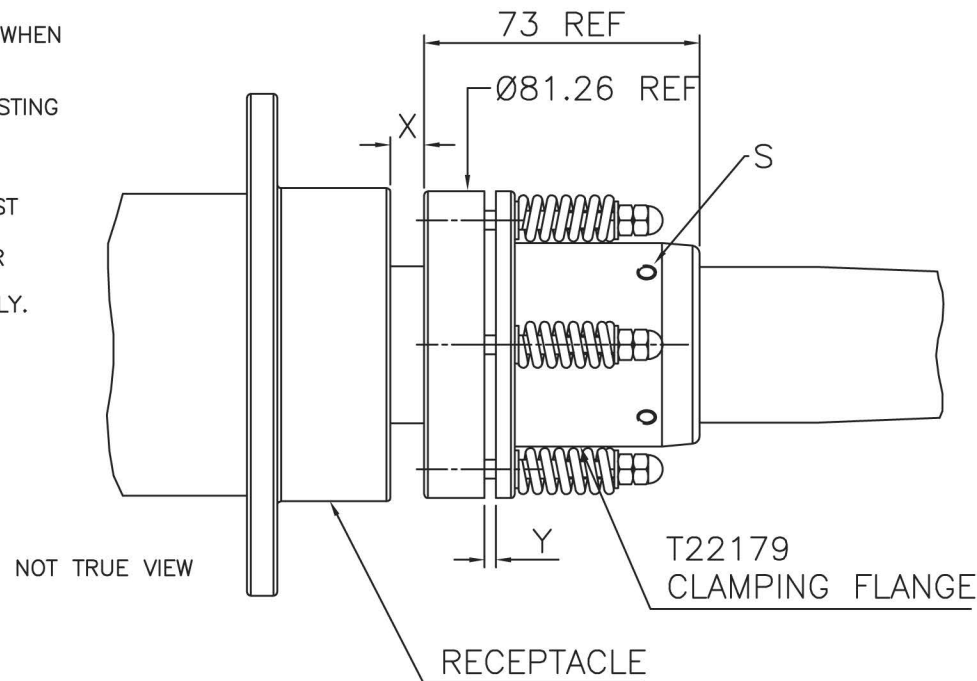
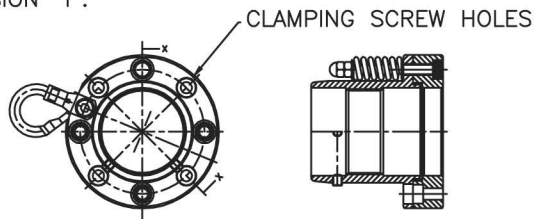


ADJUST BY ROTATING THE CLAMPING FLANGE SO THAT DIMENSION 'X' IS 9mm WHEN THE TERMINATION HAS BEEN FULLY INSERTED INTO THE RECEPTACLE AND IS AXIALLY IN LINE WITH THE RECEPTACLE.
 ENSURE THE CABLE IS SUPPORTED AT ALL TIMES BUT ESPECIALLY WHILE ADJUSTING THE FLANGE. ADJUST BY ROTATING THE ORIENTATION OF CLAMPING FLANGE TO ALIGN WITH THE MATING HOLE POSITIONS IN THE RECEPTACLE.
 NOTE: ALWAYS ADJUST SO AS TO INCREASE DIMENSION 'X'.
 LOCK CLAMPING FLANGE BY TIGHTENING THE FLANGE GRUB SCREWS (S) AGAINST THE FERRULE.
 REMOVE THE TERMINATION AND GREASE THE TAPERED SECTION OF THE RUBBER TERMINATION WITH HIGH VOLTAGE GREASE.
 REPLACE IN RECEPTACLE AND TIGHTEN DOWN CLAMPING SCREWS 4 OFF EQUALLY.

AS THE FLANGE IS TIGHTENED DOWN GAP 'Y' WILL OPEN.
 CHECK GAP 'Y' IS NOT LESS THAN 3mm IF LESS THAN 3mm RE-ADJUST.

CAUTION:
 IT IS IMPORTANT TO CHECK DIMENSION 'Y' AFTER APPROX. 1 WEEK.
 INSPECT AND ADJUST AS ABOVE IF 'Y' IS LESS THAN 1mm
 ENSURE CABLE IS AXIALLY IN LINE WITH THE RECEPTACLE WHEN MEASURING DIMENSION 'Y'.



THREAD M45x1.5mm PITCH ISO
 4 HOLES Ø6.0 THROUGH EQUIPSACED ON 65.98 PCD
 TO SUIT M5 CAP HEAD FIXINGS
 FOR FULL DETAILS SEE T22179

ALWAYS REFER TO EQUIPMENT MANUFACTURES SERVICE MANUALS FOR SERVICE/INSPECTION INTERVALS

TECHNICAL DATA:

ONLY ESSEX X-RAY APPROVED RECEPTACLES SHOULD BE USED.

FOR FULL CABLE DATA SEE ESSEX CABLE DATA SHEET

ACCESSORIES:

INSTALLATION GREASE P00075

INSTALLATION:

WARNING:
 CABLE SHOULD ONLY BE FITTED BY A TRAINED PERSON.
 CABLE CAN RETAIN ELECTRICAL CHARGE.
 DISCHARGE TO EARTH BEFORE HANDLING.
 A SUITABLE HIGH VOLTAGE GREASE SHOULD BE APPLIED TO THE TERMINATION.
 ENSURE THAT THE TERMINATION IS FULLY INSERTED IN THE SOCKET BEFORE ADJUSTING CLAMPING FLANGE.

ESSEX

Dandong Light Electric Co.,Ltd
 Rm.1606 Jiadi Square,No.64,Binjiang Middle Rd,
 Zhenxing, Dandong, Liaoning China
 T:0415-6123232
 F:0415-6123533

REVISIONS

NO.	DATE	BY

DUE TO CONTINUING PRODUCT DEVELOPMENT ESSEX X-RAY RESERVES THE RIGHT TO MODIFY DATA WITHOUT NOTICE

DRAWN	APPROVED	DATE	ISSUE	SCALE
MGM		11.11.09	1	N.T.S.

© NOT TO BE REPRODUCED IN WHOLE OR PART WITHOUT PRIOR PERMISSION OF ESSEX X-RAY & MEDICAL EQUIPMENT LTD.

TITLE
 FITTING INSTRUCTIONS FOR FLANGED TERMINATIONS
 160KV (R24) LOW MAINTENANCE

DRAWING No.
 DS1078