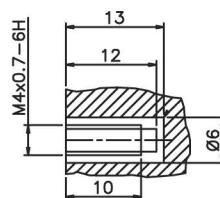


DETAIL X  
NTS



DETAIL Y  
NTS

CONNECTIONS	
PIN MARKING	CONNECTION
S	CENTRE PIN
C	UPPER RING
L	LOWER RING
UNMARKED	NOT CONNECTED

THIS DATA SHEET IS FOR IDENTIFICATION PURPOSES ONLY. NOMINAL DIMENSIONS IN MM.

### TECHNICAL DATA:

OPERATING VOLTAGE 160KV DC

1. TERMINAL MATERIAL BRASS

2. CONTACT CAVITY & TAPER MUST NOT BE FILLED WITH ANY PETROLIUM BASED OIL.

3. MATERIAL OF INSULATION IS CAPABLE OF CONTINUOUS IMMERSION IN SHELL DIALA B.G. OIL OR EQUIVALENT.

### ACCESSORIES:

CABLE ASSEMBLY USED WITH THIS RECEPTACLE TO HAVE 160KV R24 TERMINATION.

### INSTALLATION:

WARNING:  
THIS SOCKET MUST ONLY BE FITTED BY A TRAINED PERSON SEE CABLE TERMINATION DATA SHEET DS 1005 OR DS1006 FOR FITTING OF CABLE TERMINATION TO RECEPTACLE.

**ESSEX**

Dandong Light Electric Co.,Ltd  
Rm.1606 Jiadi Square,No.64,Binjiang Middle Rd,  
Zhenxing, Dandong, Liaoning China  
T:0415-6123232  
F:0415-6123533

### REVISIONS

NO.	DATE	BY

DUE TO CONTINUING PRODUCT DEVELOPMENT ESSEX X-RAY RESERVES THE RIGHT TO MODIFY DATA WITHOUT NOTICE

DRAWN	APPROVED	DATE	ISSUE	SCALE
MGM		03.11.09	1	N.T.S.

© NOT TO BE REPRODUCED IN WHOLE OR PART WITHOUT PRIOR PERMISSION OF ESSEX X-RAY & MEDICAL EQUIPMENT LTD.

TITLE  
160KV (R24) 4 PIN TUBE RECEPTACLE  
ESSEX PART NO. S51003/A

DRAWING No.

DS1076