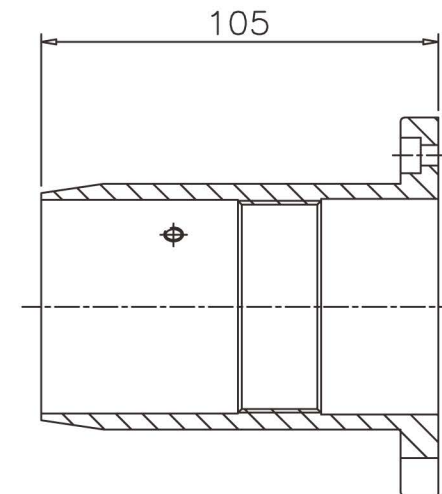
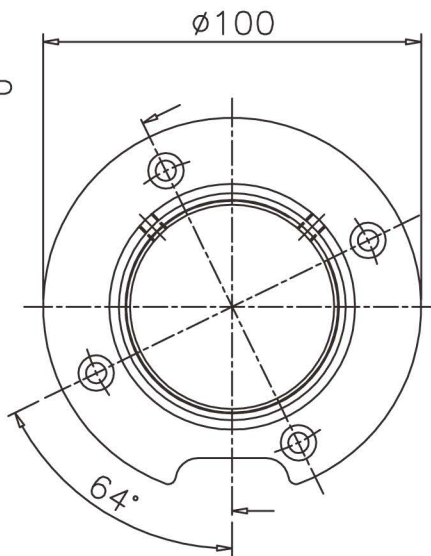
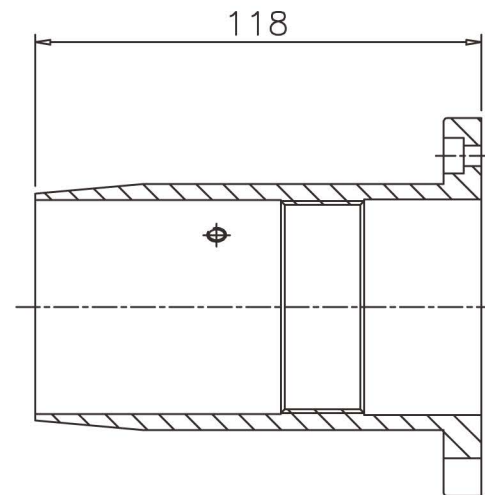
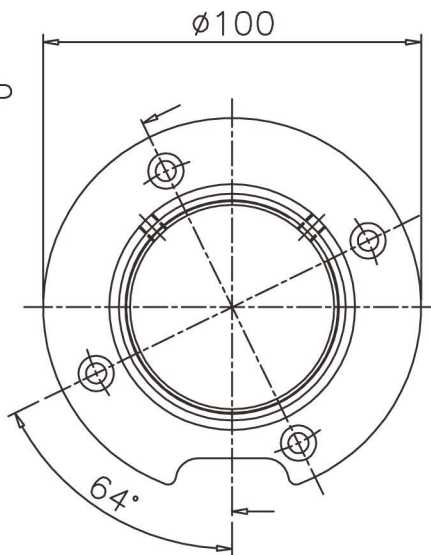


PART No. T20405
 THREAD M56x1.5mm PITCH ISO
 4 HOLES $\phi 5.4$ CBORED $\phi 9.4 \times 5.3$ DEEP
 EQUISPACED ON 80 PCD
 FOR USE WITH RIGHT ANGLE
 TERMINATIONS



PART No. T20289
 THREAD M56x1.5mm PITCH ISO
 4 HOLES $\phi 5.4$ CBORED $\phi 9.4 \times 5.3$ DEEP
 EQUISPACED ON 80 PCD



THIS DATA SHEET IS FOR IDENTIFICATION
 PURPOSES ONLY. NOMINAL DIMENSIONS IN MM.

ESSEX

Dandong Light Electric Co.,Ltd
 Rm.1606 Jiadi Square,No.64,Binjiang Middle Rd,
 Zhenxing, Dandong, Liaoning China
 T:0415-6123232
 F:0415-6123533

REVISIONS			DUE TO CONTINUING PRODUCT DEVELOPMENT ESSEX X-RAY RESERVES THE RIGHT TO MODIFY DATA WITHOUT NOTICE					
NO.	DATE	BY	DRAWN	APPROVED	DATE	ISSUE	SCALE	© NOT TO BE REPRODUCED IN WHOLE OR PART WITHOUT PRIOR PERMISSION OF ESSEX X-RAY & MEDICAL EQUIPMENT LTD.
			MGM		01.03.02	1	N.T.S.	
			TITLE					DRAWING No.
			225 KV FLANGES					DS1064