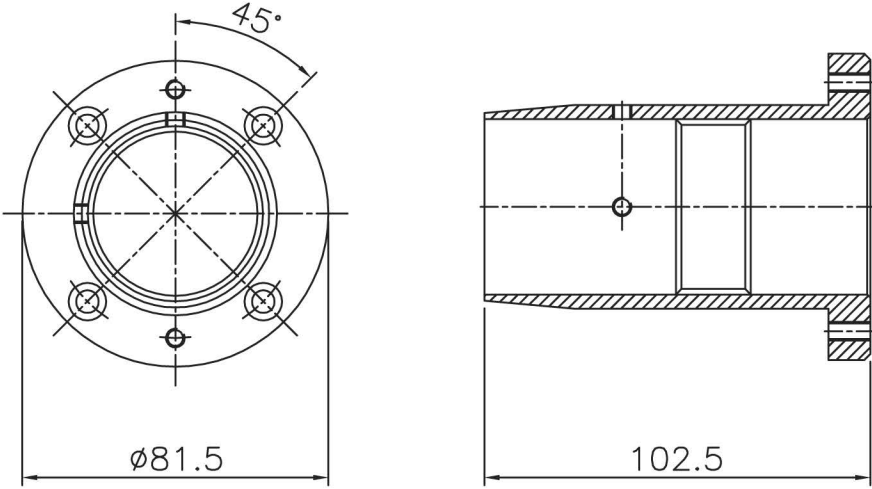
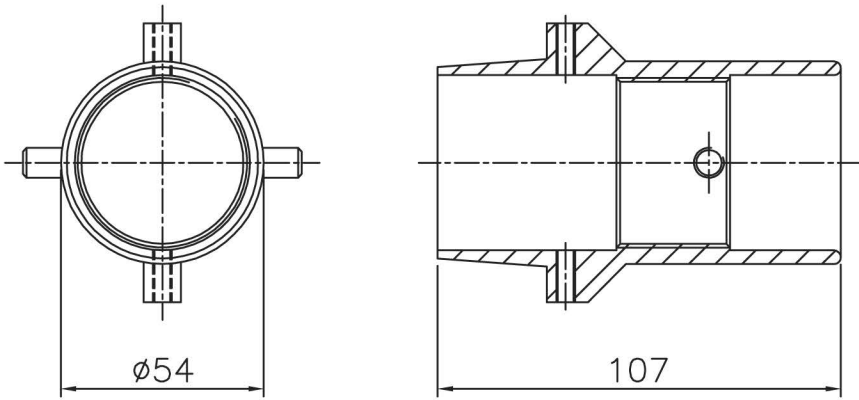


PART No. T20131/A  
THREAD M45x1.5mm PITCH ISO  
4 HOLES Ø6.0 CBORED Ø10.0x5.55 DEEP  
EQUISPACED ON 65.98 PCD



PART No. T20096/B  
THREAD M45x1.5mm PITCH ISO  
QUICKLOCK STYLE FLANGE



THIS DATA SHEET IS FOR IDENTIFICATION  
PURPOSES ONLY. NOMINAL DIMENSIONS IN MM.

**ESSEX**

Dandong Light Electric Co.,Ltd  
Rm.1606 Jiadi Square,No.64,Binjiang Middle Rd,  
Zhenxing, Dandong, Liaoning China  
T:0415-6123232  
F:0415-6123533

| REVISIONS |      |    | DUE TO CONTINUING PRODUCT DEVELOPMENT ESSEX X-RAY RESERVES THE RIGHT TO MODIFY DATA WITHOUT NOTICE |          |          |       |        |   |
|-----------|------|----|--|----------|----------|-------|--------|---|
| NO.       | DATE | BY | DRAWN  | APPROVED | DATE     | ISSUE | SCALE  | © NOT TO BE REPRODUCED IN WHOLE OR PART WITHOUT<br>PRIOR PERMISSION OF ESSEX X-RAY & MEDICAL EQUIPMENT LTD. |
|           |      |    | MGM  |          | 01.03.02 | 1     | N.T.S. |   |
|           |      |    | TITLE  |          |          |       |        |   |
|           |      |    | 160 KV FLANGES   |          |          |       |        |   |
|           |      |    |  |          |          |       |        | DRAWING No.<br>DS1062   |