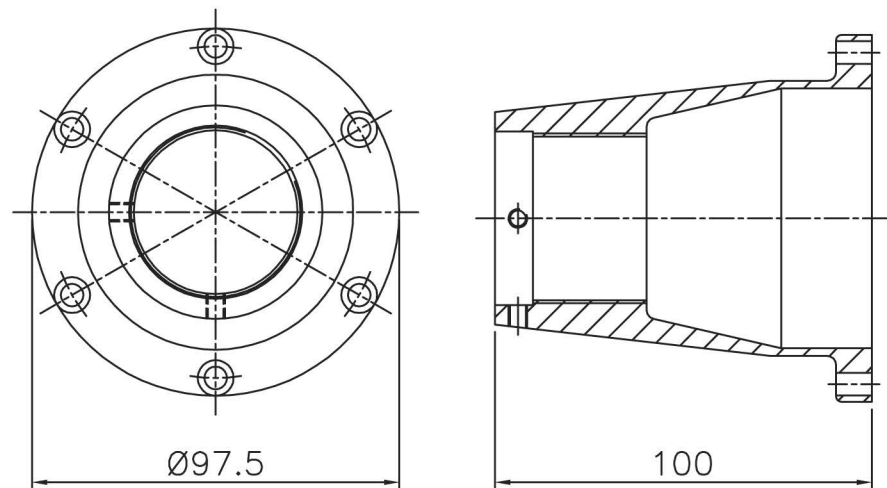
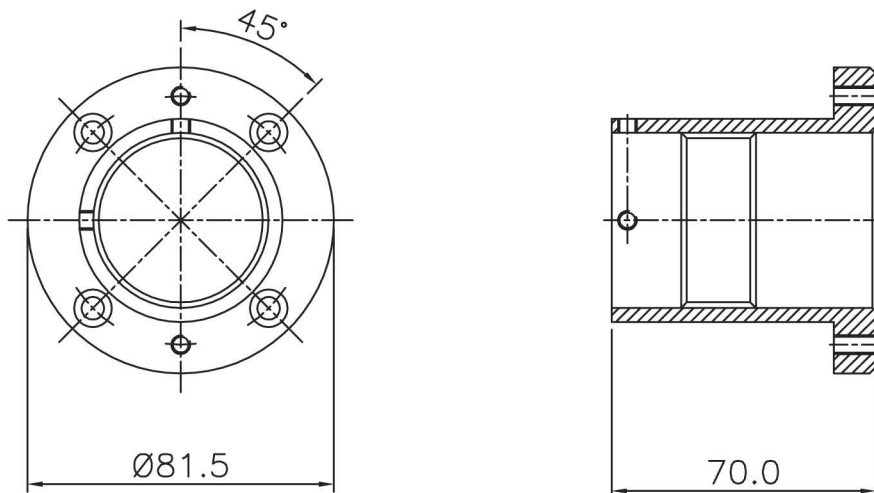


PART No. T20045/C
 THREAD M45x1.5mm PITCH ISO
 6 HOLES Ø6.0 SPOT FACED Ø9.5
 EQUISPACED ON 87.98 PCD

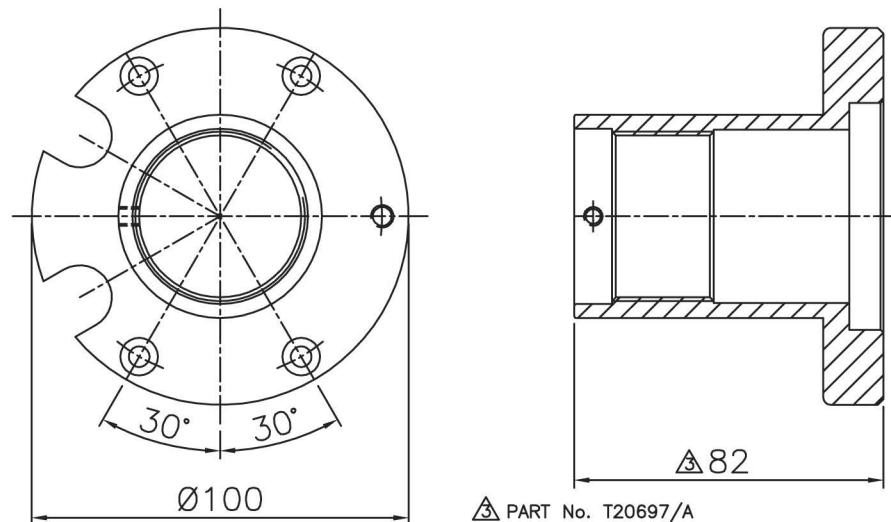


PART No. T20045/D
 THREAD M45x1.5mm PITCH ISO
 6 HOLES Ø6.0 SPOT FACED Ø9.5
 EQUISPACED ON 87.98 PCD

FOR USE WITH RIGHT ANGLE TERMINATIONS



PART No. T20844
 THREAD M45x1.5mm PITCH ISO
 4 HOLES Ø6.0 CBORED Ø10.0x5.55 DEEP
 EQUISPACED ON 65.98 PCD



△ PART No. T20697/A
 THREAD M45x1.5mm PITCH ISO
 4 HOLES Ø5.5 CBORED Ø10.0x5.0 DEEP
 ON 86 PCD

THIS DATA SHEET IS FOR IDENTIFICATION
 PURPOSES ONLY. NOMINAL DIMENSIONS IN MM.

ESSEX

Dandong Light Electric Co., Ltd
 Rm.1606 Jiadi Square, No.64, Binjiang Middle Rd,
 Zhenxing, Dandong, Liaoning China
 T:0415-6123232
 F:0415-6123533

REVISIONS			DUE TO CONTINUING PRODUCT DEVELOPMENT ESSEX X-RAY RESERVES THE RIGHT TO MODIFY DATA WITHOUT NOTICE					
NO.	DATE	BY	DRAWN	APPROVED	DATE	ISSUE	SCALE	© NOT TO BE REPRODUCED IN WHOLE OR PART WITHOUT PRIOR PERMISSION OF ESSEX X-RAY & MEDICAL EQUIPMENT LTD.
2	24.02.03	DCN 1805	MGM		01.03.02	3	N.T.S.	
3	21.01.09	DCN 2888	TITLE					DRAWING No.
			160 KV FLANGES					DS1061