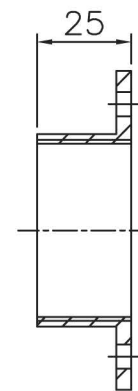
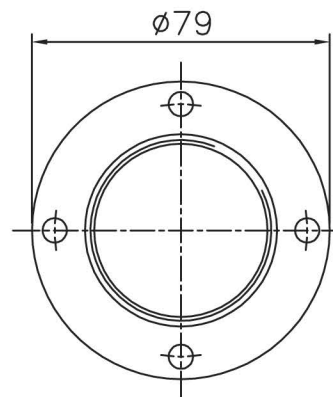
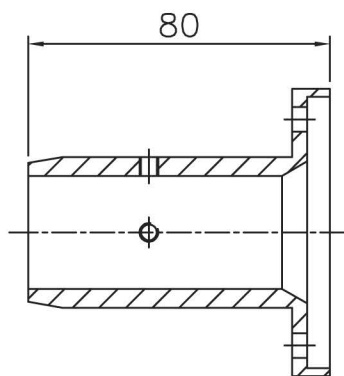
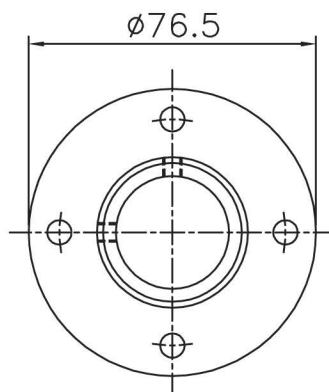


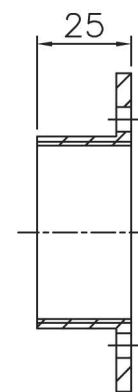
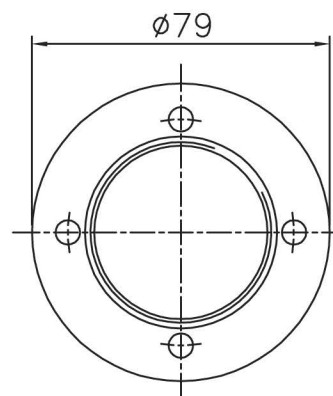
PART No. T20052
4 HOLES $\phi 6.5$
EQUISPACED ON 67 PCD
THIS FLANGE CAN ALSO BE USED WITH 65KV TERMINATIONS



PART No. T20785/B
4 HOLES $\phi 6.5$
EQUISPACED ON 67 PCD
THREAD M48x1.5mm ISO
FOR USE WITH RIGHT ANGLE
TERMINATION ON C2212 CABLE



PART No. T20051/A
4 HOLES $\phi 6.5$
EQUISPACED ON 60 PCD
THIS FLANGE CAN ALSO BE USED WITH 65KV TERMINATIONS



PART No. T20785/A
4 HOLES $\phi 6.5$
EQUISPACED ON 60 PCD
THREAD M48x1.5mm ISO
FOR USE WITH RIGHT ANGLE
TERMINATION ON C2212 CABLE

THIS DATA SHEET IS FOR IDENTIFICATION
PURPOSES ONLY. NOMINAL DIMENSIONS IN MM.

ESSEX

Dandong Light Electric Co.,Ltd
Rm.1606 Jiadi Square,No.64,Binjiang Middle Rd,
Zhenxing, Dandong, Liaoning China
T:0415-6123232
F:0415-6123533

REVISIONS			DUE TO CONTINUING PRODUCT DEVELOPMENT ESSEX X-RAY RESERVES THE RIGHT TO MODIFY DATA WITHOUT NOTICE					
NO.	DATE	BY	DRAWN	APPROVED	DATE	ISSUE	SCALE	© NOT TO BE REPRODUCED IN WHOLE OR PART WITHOUT PRIOR PERMISSION OF ESSEX X-RAY & MEDICAL EQUIPMENT LTD.
2	09.05.03	DCN 1845	MGM		01.03.02	2	N.T.S.	
			TITLE					DRAWING No.
			100 KV FLANGES SHEET 1 OF 2					DS1060