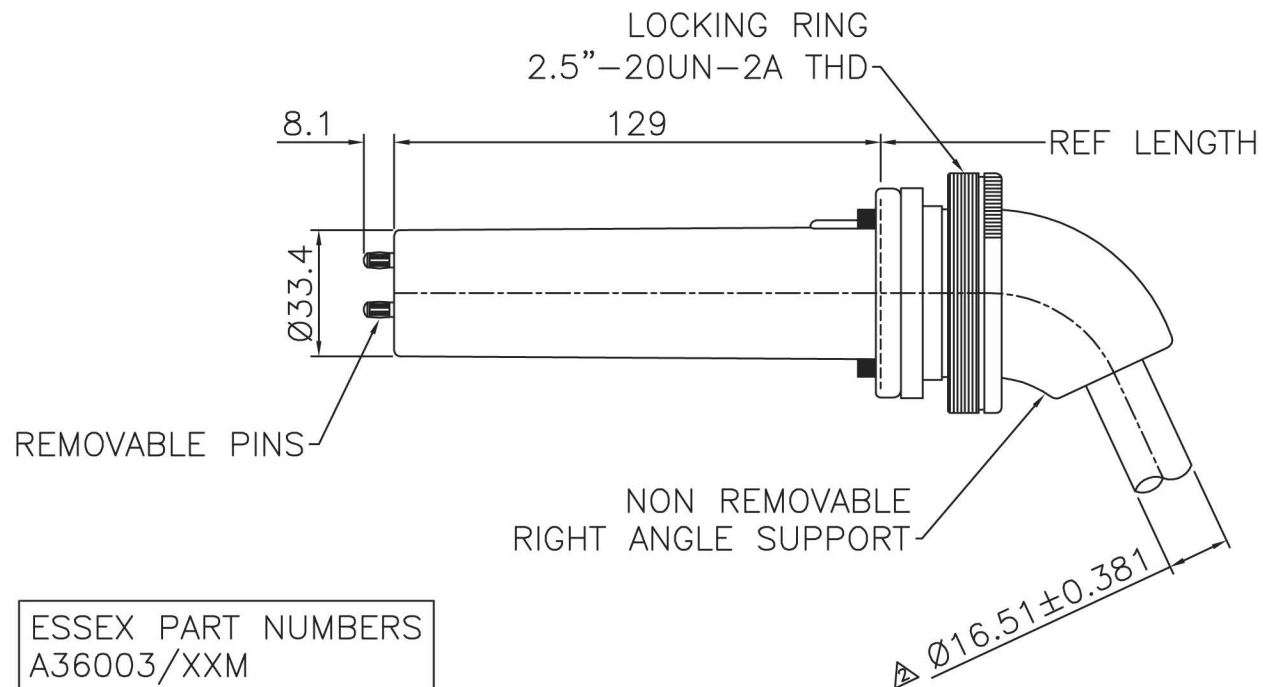
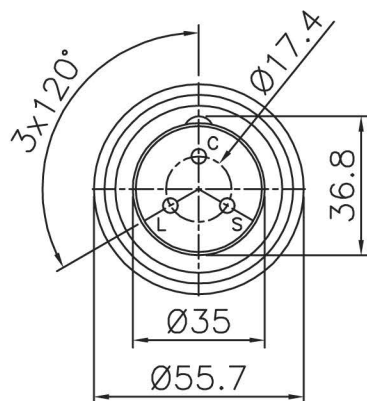





CONTACTS TO FIT $\varnothing 4\text{mm}$ HOLE

ESSEX PART NUMBERS
A36003/XXM
CABLE TYPE C2214

THIS DATA SHEET IS FOR IDENTIFICATION
PURPOSES ONLY. NOMINAL DIMENSIONS IN MM.

TECHNICAL DATA:			ACCESSORIES:					INSTALLATION:			
<p>TERMINATION:—</p> <p>NOMINAL OPERATING VOLTAGE 75KV CABLE LENGTH TOLERANCE +/- 100mm SOLID RESIN TERMINATION.</p> <p>CABLE:— VOLTAGE WITHSTAND 75KV DC 25KV (RMS) AC </p> <p>FOR FULL CABLE DATA SEE ESSEX CABLE DATA SHEET </p>			<p>PIN REPLACEMENT KIT P00432</p> <p>INSTALLATION GREASE P00075</p>					<p>WARNING:</p> <p>CABLE SHOULD ONLY BE FITTED BY A TRAINED PERSON. CABLE CAN RETAIN ELECTRICAL CHARGE. DISCHARGE TO EARTH BEFORE HANDLING. A SUITABLE HIGH VOLTAGE GREASE SHOULD BE APPLIED TO THE TERMINATION.</p> <p>ENSURE THAT THE TERMINATION IS FULLY INSERTED IN THE SOCKET BEFORE SECURING THE LOCKING RING. AFTER INSTALLATION FULLY TIGHTEN LOCKING RING TO PREVENT UNAUTHORISED DISCONNECTION.</p>			
 Dandong Light Electric Co.,Ltd Rm.1606 Jiadi Square,No.64,Binjiang Middle Rd, Zhenxing, Dandong, Liaoning China T:0415-6123232 F:0415-6123533	REVISIONS			DUE TO CONTINUING PRODUCT DEVELOPMENT ESSEX X-RAY RESERVES THE RIGHT TO MODIFY DATA WITHOUT NOTICE							
	NO.	DATE	BY	DRAWN	APPROVED	DATE	ISSUE	SCALE	© NOT TO BE REPRODUCED IN WHOLE OR PART WITHOUT PRIOR PERMISSION OF ESSEX X-RAY & MEDICAL EQUIPMENT LTD.		
	2	10.03.09	DCN 2905	MGM		26.02.02	2	N.T.S.			
				TITLE 3 PIN 75KV TERMINATION SOLID PLUGS WITH RIGHT ANGLE SUPPORT							
								DRAWING No.			
								DS1059			