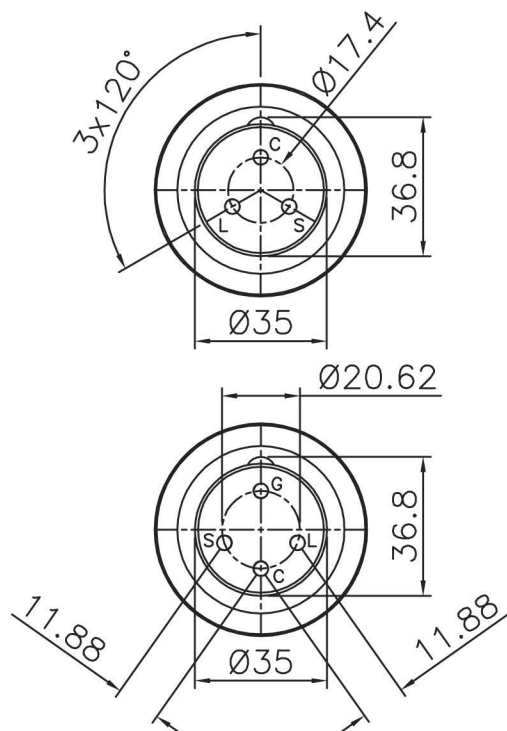


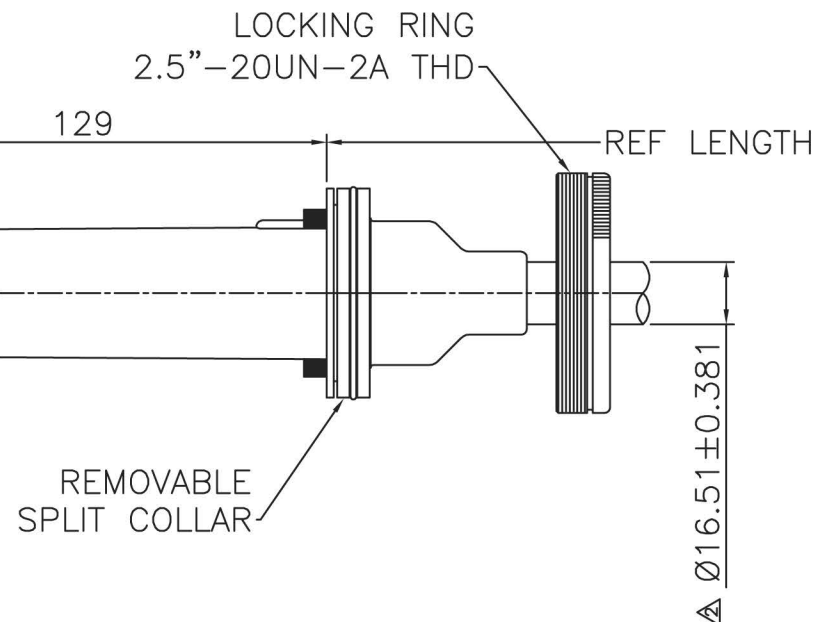
CONTACTS TO FIT Ø4mm HOLE
WITH FLANGE AND COLLAR REMOVED MAX DIA 40



REMOVABLE PINS

ESSEX PART NUMBERS
A36005/XXM – 3 PIN
CABLE TYPE C2214

A36006/XXM – 4 PIN
CABLE TYPE C2226



THIS DATA SHEET IS FOR IDENTIFICATION
PURPOSES ONLY. NOMINAL DIMENSIONS IN MM.

TECHNICAL DATA:

TERMINATION:-

NOMINAL OPERATING VOLTAGE 75KV
CABLE LENGTH TOLERANCE +/- 100mm
SOLID RESIN TERMINATION.

CABLE:- VOLTAGE WITHSTAND 75KV DC
25KV (RMS) AC

FOR FULL CABLE DATA SEE ESSEX CABLE DATA SHEET

ACCESSORIES:

PIN REPLACEMENT KIT P00432

INSTALLATION GREASE P00075

INSTALLATION:

WARNING:
CABLE SHOULD ONLY BE FITTED BY A TRAINED PERSON.
CABLE CAN RETAIN ELECTRICAL CHARGE.
DISCHARGE TO EARTH BEFORE HANDLING.
A SUITABLE HIGH VOLTAGE GREASE SHOULD BE
APPLIED TO THE TERMINATION.

ENSURE THAT THE TERMINATION IS FULLY INSERTED
IN THE SOCKET BEFORE SECURING THE LOCKING RING.
AFTER INSTALLATION FULLY TIGHTEN LOCKING RING
TO PREVENT UNAUTHORISED DISCONNECTION.

ESSEX

Dandong Light Electric Co.,Ltd
Rm.1606 Jiadi Square,No.64,Binjiang Middle Rd,
Zhenxing, Dandong, Liaoning China
T:0415-6123232
F:0415-6123533

REVISIONS

NO.	DATE	BY
2	10.03.09	DCN 2905

DUE TO CONTINUING PRODUCT DEVELOPMENT ESSEX X-RAY RESERVES THE RIGHT TO MODIFY DATA WITHOUT NOTICE

DRAWN	APPROVED	DATE	ISSUE	SCALE
MGM		26.02.02	2	N.T.S.
TITLE				
3/4 PIN 75KV TERMINATION SOLID PLUGS REMOVABLE FLANGE				

© NOT TO BE REPRODUCED IN WHOLE OR PART WITHOUT
PRIOR PERMISSION OF ESSEX X-RAY & MEDICAL EQUIPMENT LTD.

DRAWING No.

DS1057