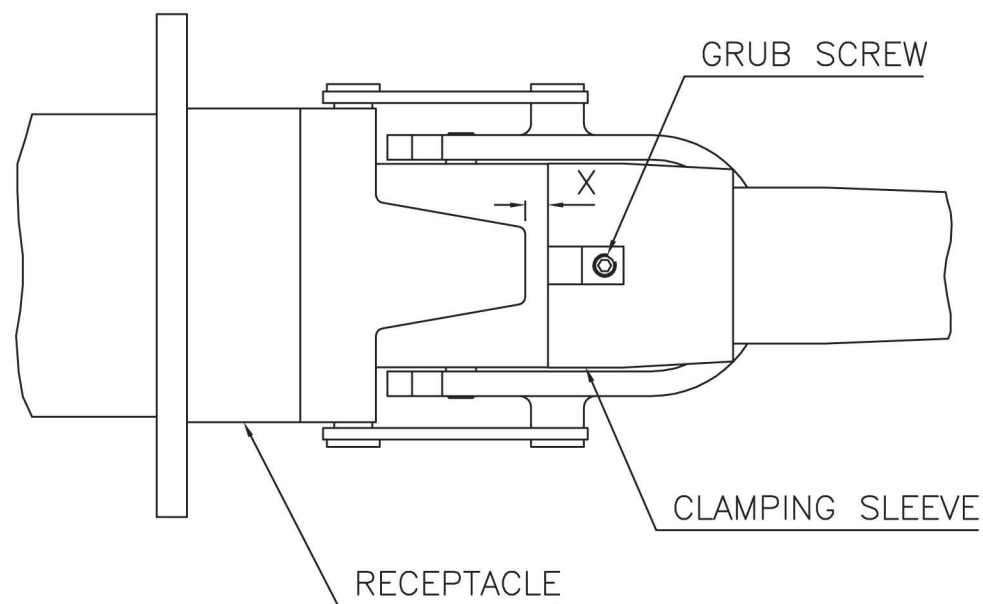


ADJUST CLAMPING SLEEVE SO THAT THERE IS A DIFFERENCE FOR DIMENSION 'X' OF 6mm BETWEEN THE LOCKED AND UNLOCKED POSITION. LOCK CLAMPING SLEEVE BY TIGHTENING GRUB SCREWS AGAINST FERRULE. REMOVE TERMINATION AND GREASE TAPERED SECTION OF RUBBER TERMINATION WITH HIGH VOLTAGE GREASE. REPLACE IN RECEPTACLE AND CLAMP IN POSITION USING QUICK LOCK DEVICE. RELEASE QUICK LOCK AND CHECK DIFFERENCE IN 'X' IS 6mm IF NOT RE-ADJUST AS ABOVE.

CAUTION:
IT IS IMPORTANT TO CHECK THE DIFFERENCE IN DIMENSION 'X' AFTER APPROXIMATELY ONE WEEK. ADJUST AS ABOVE IF REQUIRED.



TECHNICAL DATA:

ONLY ESSEX X-RAY APPROVED RECEPTACLES TO BE USED.



FOR FULL CABLE DATA SEE ESSEX CABLE DATA SHEET

ACCESSORIES:

INSTALLATION GREASE P00075

INSTALLATION:

WARNING:
CABLE SHOULD ONLY BE FITTED BY A TRAINED PERSON. CABLE CAN RETAIN ELECTRICAL CHARGE. DISCHARGE TO EARTH BEFORE HANDLING. A SUITABLE HIGH VOLTAGE GREASE SHOULD BE APPLIED TO THE TERMINATION.

ESSEX

Dandong Light Electric Co.,Ltd
Rm.1606 Jiadi Square,No.64,Binjiang Middle Rd,
Zhenxing, Dandong, Liaoning China
T:0415-6123232
F:0415-6123533

REVISIONS

NO.	DATE	BY
2	21.12.00	DCN 1409
3	09.03.09	DCN 2905

DUE TO CONTINUING PRODUCT DEVELOPMENT ESSEX X-RAY RESERVES THE RIGHT TO MODIFY DATA WITHOUT NOTICE

DRAWN	APPROVED	DATE	ISSUE	SCALE
MGM		28.02.00	3	N.T.S.

© NOT TO BE REPRODUCED IN WHOLE OR PART WITHOUT PRIOR PERMISSION OF ESSEX X-RAY & MEDICAL EQUIPMENT LTD.

TITLE
FITTING INSTRUCTIONS FOR QUICK LOCK
TERMINATIONS 160,210kV

DRAWING No.

DS1043