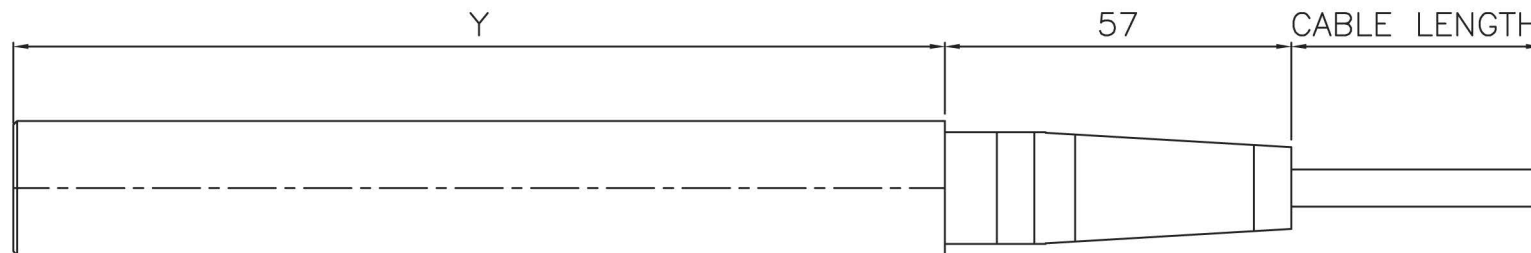
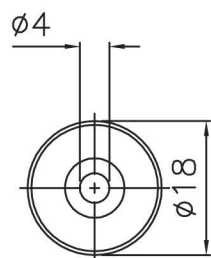


ARALDITE INTO RECEPTACLE BODY FOR MAXIMUM ELECTRICAL STRENGTH/
MAXIMUM PANEL THICKNESS 2.0mm. LOCATING HOLE $\phi 28.5$ OR PG21 THREAD.



TECHNICAL DATA:

TERMINATION:-

NOMINAL OPERATING VOLTAGE SEE TABLE
CABLE LENGTH TOLERANCE $\pm 100\text{mm}$

VOLTS	X	Y
15KV	40	41.5
30KV	64	75
40KV	89	100
50KV	114	125

ACCESSORIES:

THE FOLLOWING ESSEX CABLES CAN BE USED WITH
THIS TERMINATION:
C0040
C2149/A

CUSTOMER FREE ISSUE CABLE CAN BE CONSIDERED
ON REQUEST.

INSTALLATION:

WARNING:
CABLE SHOULD ONLY BE FITTED BY A TRAINED PERSON.
AFTER INSTALLATION FULLY TIGHTEN LOCKING SCREW
WITH SCREWDRIVER TO PREVENT UNAUTHORISED
DISCONNECTION.
CABLE CAN RETAIN ELECTRICAL CHARGE.
DISCHARGE TO EARTH BEFORE HANDLING.

ESSEX

Dandong Light Electric Co.,Ltd
Rm.1606 Jiadi Square, No.64, Binjiang Middle Rd,
Zhenxing, Dandong, Liaoning China
T:0415-6123232
F:0415-6123533

REVISIONS

NO.	DATE	BY

DUE TO CONTINUING PRODUCT DEVELOPMENT ESSEX X-RAY RESERVES THE RIGHT TO MODIFY DATA WITHOUT NOTICE

DRAWN	APPROVED	DATE	ISSUE	SCALE
MGM		23.02.00	1	N.T.S.

© NOT TO BE REPRODUCED IN WHOLE OR PART WITHOUT
PRIOR PERMISSION OF ESSEX X-RAY & MEDICAL EQUIPMENT LTD.

TITLE

LOW VOLTAGE TERMINATIONS

DRAWING No.

DS1042