

ADJUST CLAMPING FLANGE SO THAT DIMENSION 'X' IS 6mm WHEN THE TERMINATION HAS BEEN FULLY INSERTED INTO THE RECEPTACLE.

ADJUST ORIENTATION OF CLAMPING FLANGE TO MATCH HOLE POSITIONS IN RECEPTACLE.

NOTE:

ALWAYS ADJUST SO AS TO INCREASE DIMENSION 'X'.

ENSURE CLAMPING SCREWS ARE OF SUITABLE LENGTH TO ENGAGE IN THE RECEPTACLE BY 5mm BEFORE THE PRESSURE GAP 'X' IS TAKEN UP.

LOCK CLAMPING FLANGE BY TIGHTENING FLANGE GRUB SCREWS AGAINST FERRULE.

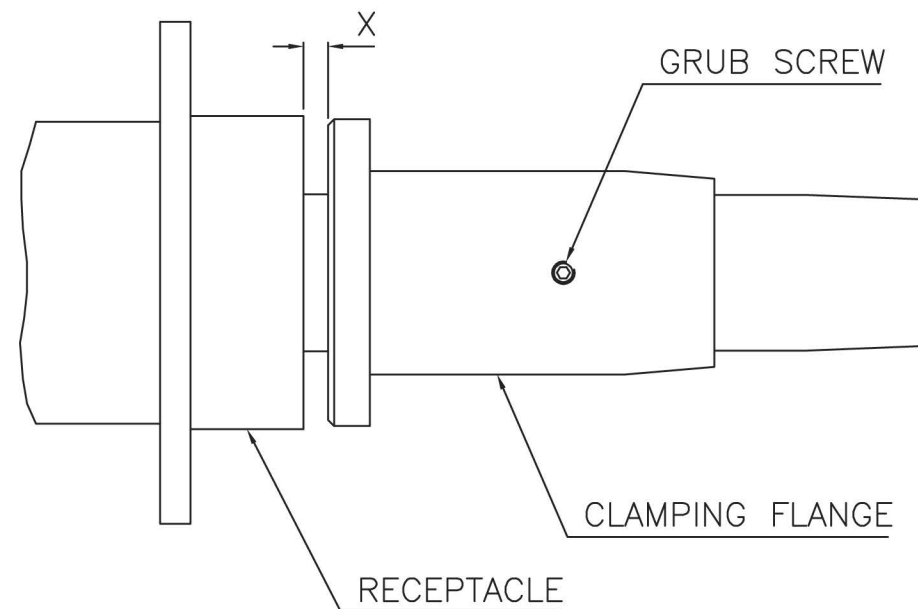
REMOVE TERMINATION AND GREASE TAPERED SECTION OF RUBBER TERMINATION WITH HIGH VOLTAGE GREASE.

REPLACE IN RECEPTACLE AND TIGHTEN DOWN CLAMPING SCREWS EQUALLY.

RELEASE SCREWS AND CHECK 'X' IS 6mm IF NOT RE-ADJUST AS ABOVE.

CAUTION:

IT IS IMPORTANT TO CHECK DIMENSION 'X' AFTER APPROX. 1 WEEK. ADJUST AS ABOVE IF REQUIRED.



TECHNICAL DATA:

ONLY ESSEX X-RAY APPROVED RECEPTACLES SHOULD BE USED.

FOR FULL CABLE DATA SEE ESSEX CABLE DATA SHEET



ACCESSORIES:

INSTALLATION GREASE P00075

INSTALLATION:

WARNING:

CABLE SHOULD ONLY BE FITTED BY A TRAINED PERSON. CABLE CAN RETAIN ELECTRICAL CHARGE. DISCHARGE TO EARTH BEFORE HANDLING. A SUITABLE HIGH VOLTAGE GREASE SHOULD BE APPLIED TO THE TERMINATION.

ENSURE THAT THE TERMINATION IS FULLY INSERTED IN THE SOCKET BEFORE ADJUSTING CLAMPING FLANGE.

ESSEX

Dandong Light Electric Co.,Ltd
Rm.1606 Jiadi Square,No.64,Binjiang Middle Rd,
Zhenxing, Dandong, Liaoning China
T:0415-6123232
F:0415-6123533

REVISIONS

NO.	DATE	BY
2	13.03.00	DCN 1194
3	21.12.00	DCN 1409
4	07.12.06	DCN 2590
5	17.03.09	DCN 2905

DUE TO CONTINUING PRODUCT DEVELOPMENT ESSEX X-RAY RESERVES THE RIGHT TO MODIFY DATA WITHOUT NOTICE

DRAWN	APPROVED	DATE	ISSUE	SCALE
MGM		23.02.00	5	N.T.S.

© NOT TO BE REPRODUCED IN WHOLE OR PART WITHOUT PRIOR PERMISSION OF ESSEX X-RAY & MEDICAL EQUIPMENT LTD.

TITLE
FITTING INSTRUCTIONS FOR FLANGED TERMINATIONS
160KV, 210KV, 225KV

DRAWING No.

DS1041