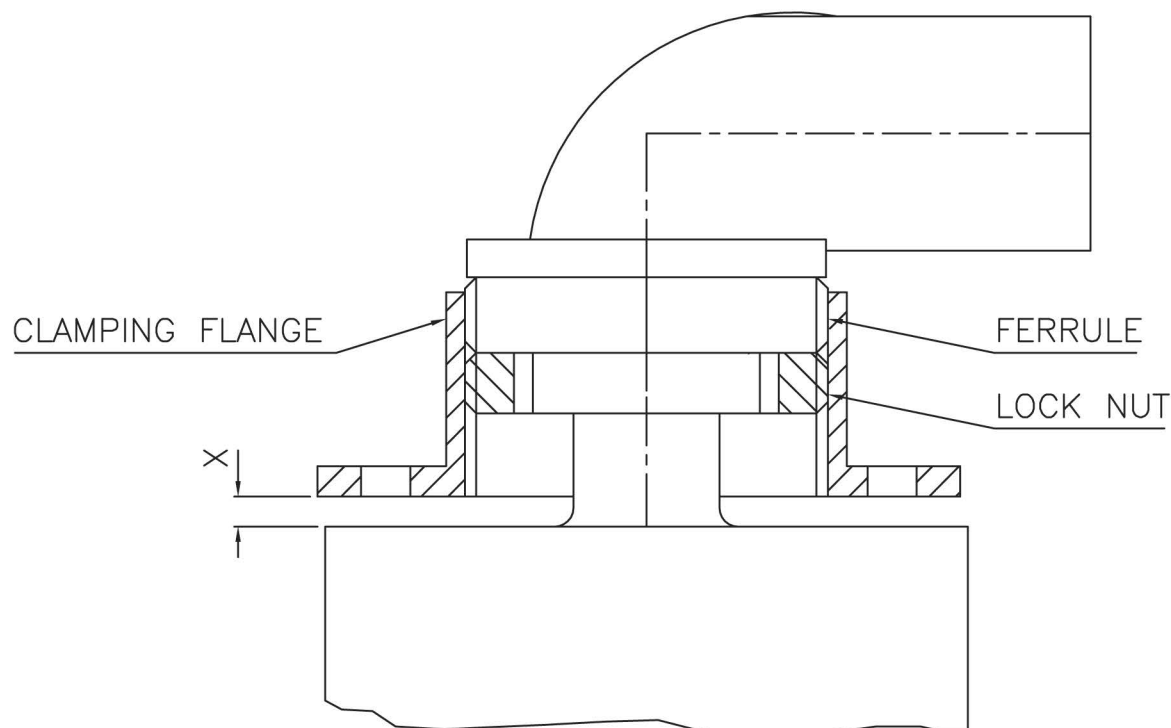


ADJUST CLAMPING FLANGE SO THAT DIMENSION 'X' IS 4mm WHEN THE TERMINATION HAS BEEN FULLY INSERTED INTO THE RECEPTACLE. REMOVE TERMINATION AND LOCK FLANGE IN POSITION BY TIGHTENING LOCK NUT AGAINST FERRULE. GREASE TERMINATION AND REPLACE IN RECEPTACLE. ENSURE CLAMPING SCREWS ARE OF SUITABLE LENGTH TO ENGAGE IN THE RECEPTACLE BY 5mm BEFORE THE PRESSURE GAP 'X' IS TAKEN UP. TIGHTEN DOWN CLAMPING SCREWS EQUALLY.



#### TECHNICAL DATA:

##### TERMINATION:—

NOMINAL OPERATING VOLTAGE 100KV  
CABLE LENGTH TOLERANCE  $\pm 100\text{mm}$

CABLE:— VOLTAGE WITHSTAND 100KV DC  
30KV (RMS) AC

FOR FULL CABLE DATA SEE ESSEX CABLE DATA SHEET

#### ACCESSORIES:

INSTALLATION GREASE P00075

#### INSTALLATION:

##### WARNING:

CABLE SHOULD ONLY BE FITTED BY A TRAINED PERSON.  
CABLE CAN RETAIN ELECTRICAL CHARGE.  
DISCHARGE TO EARTH BEFORE HANDLING.  
A SUITABLE HIGH VOLTAGE GREASE SHOULD BE APPLIED TO THE TERMINATION.

ENSURE THAT THE TERMINATION IS FULLY INSERTED IN THE SOCKET BEFORE ADJUSTING CLAMPING FLANGE.

# ESSEX

Dandong Light Electric Co.,Ltd  
Rm.1606 Jiadi Square,No.64,Binjiang Middle Rd,  
Zhenxing, Dandong, Liaoning China  
T:0415-6123232  
F:0415-6123533

#### REVISIONS

NO.	DATE	BY
2	07.12.06	DCN 2590
3	09.03.09	DCN 2905

DUE TO CONTINUING PRODUCT DEVELOPMENT ESSEX X-RAY RESERVES THE RIGHT TO MODIFY DATA WITHOUT NOTICE

DRAWN	APPROVED	DATE	ISSUE	SCALE
MGM		22.02.00	3	N.T.S.

© NOT TO BE REPRODUCED IN WHOLE OR PART WITHOUT PRIOR PERMISSION OF ESSEX X-RAY & MEDICAL EQUIPMENT LTD.

TITLE

FITTING INSTRUCTIONS 100KV R/A

DRAWING No.

DS1040