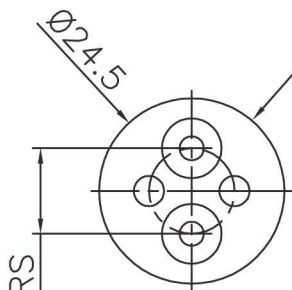
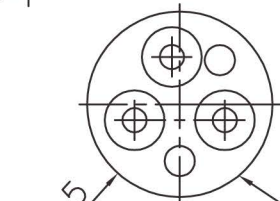


VIEW ON PINS

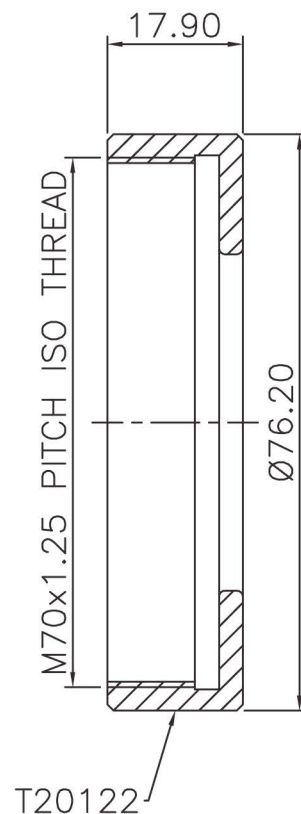
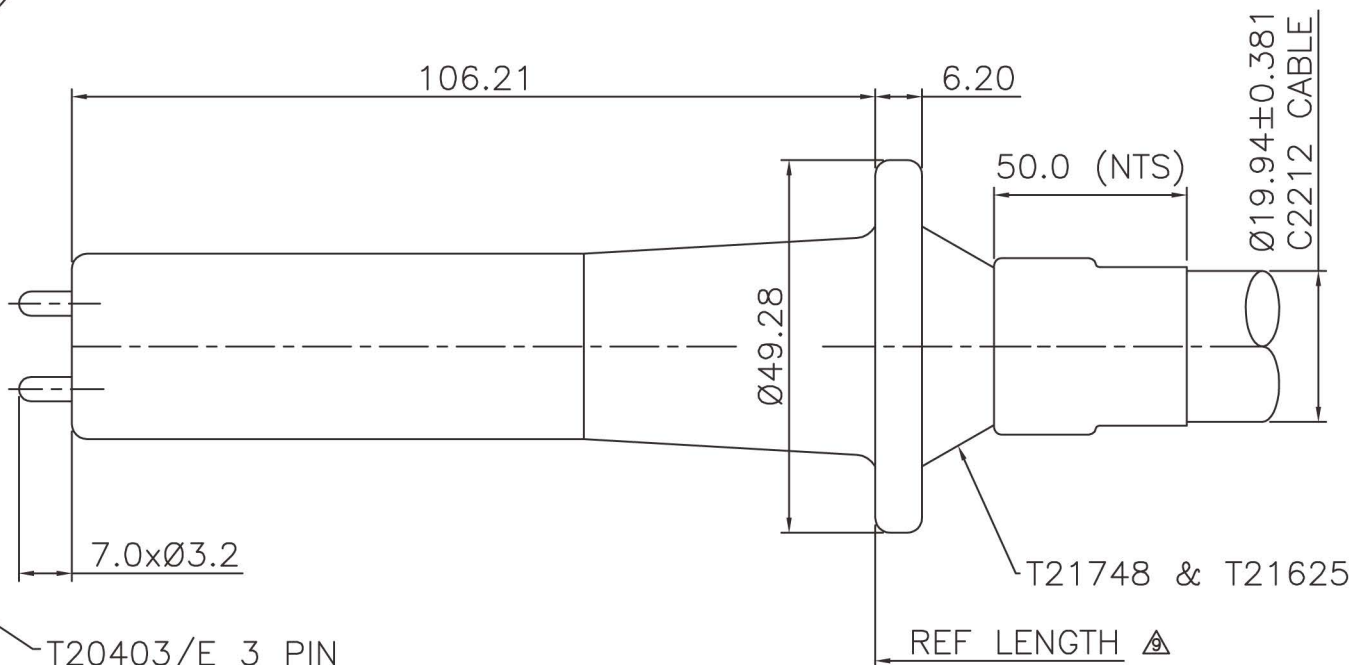
T20402/E 2 PIN



11.3 CTRS



T20403/E 3 PIN



THIS DATA SHEET IS FOR IDENTIFICATION
PURPOSES ONLY. NOMINAL DIMENSIONS IN MM.

TECHNICAL DATA:

TERMINATION:-

NOMINAL OPERATING VOLTAGE 55KV DC
- USING AN ESSEX X-RAY APPROVED RECEPTACLE
CABLE LENGTH TOLERANCE +/- 100mm

CABLE:- VOLTAGE WITHSTAND 100KV DC
30KV (RMS) AC

FOR FULL CABLE DATA SEE ESSEX CABLE DATA SHEET

ACCESSORIES:

LOCKING RING T20122

INSTALLATION GREASE P00075

INSTALLATION:

WARNING:

CABLE SHOULD ONLY BE FITTED BY A TRAINED PERSON.
A SUITABLE HIGH VOLTAGE GREASE SHOULD BE APPLIED
TO THE TERMINATION.
ENSURE THAT THE TERMINATION IS FULLY INSERTED IN THE
SOCKET BEFORE SECURING THE LOCKING RING.

ESSEX

Dandong Light Electric Co.,Ltd
Rm.1606 Jiadi Square,No.64,Binjiang Middle Rd,
Zhenxing, Dandong, Liaoning China
T:0415-6123232
F:0415-6123533

REVISIONS

NO.	DATE	BY
6	18.09.06	DCN 2541
7	14.11.06	DCN 2567
8	06.03.09	DCN 2905
9	06.04.11	DCN 3208

DUE TO CONTINUING PRODUCT DEVELOPMENT ESSEX X-RAY RESERVES THE RIGHT TO MODIFY DATA WITHOUT NOTICE

DRAWN	APPROVED	DATE	ISSUE	SCALE
JDF		15.07.96	9	N.T.S.

© NOT TO BE REPRODUCED IN WHOLE OR PART WITHOUT
PRIOR PERMISSION OF ESSEX X-RAY & MEDICAL EQUIPMENT LTD.

TITLE

55KV TERMINATION
(CABLE TYPE C2212)

DRAWING No.

DS1010